

Simple, stand-alone and powerful...

PRO-W / PRO-WA is the solution for the recording and analysis of sound and vibration data that addresses all issues encountered on the field and/or in the laboratory.

This solution presents major benefits, in particular:

- ▶ **Stand-alone capacities**, offered by the Pocket PC remote control and the NetdB acquisition front end, including a hard disk and a battery.
- ▶ **High acquisition and processing power** from the dBFA Suite software, which leads the user through until the editing of customised reports.

PRO-W/PRO-WA

Complete system and quick start-up...



Pocket PC remote control and NetdB: autonomy and portability

- ▶ Acquisition control from the Pocket PC, in WiFi or fixed communication mode
- ▶ Storage: up to 85GB on the internal disk of NetdB
- ▶ Stand-alone operating life for NetdB: up to 2 hours (12 channels at full speed) using integrated batteries or 12VDC cigar lighter
- ▶ Reduced system size and weight: 12 acquisition channels in a single unit box

NetdB: powerful acquisition capacities

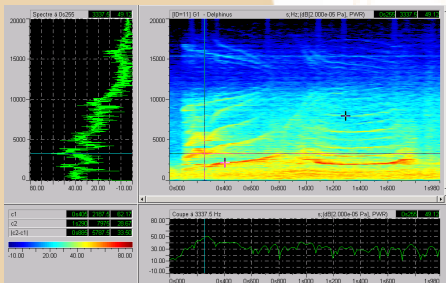
- ▶ 12 channels sampled at 51200 Hz over 24 bits [DC -20 kHz], dynamic range: 105 dB
- ▶ Signal generation: sine, swept sine, white/pink noise, burst, MLS, wav file
- ▶ Power supply for IEPE* transducers / 200 V with additional rear card (option)
- ▶ Qualified for field operations (EMC, vibration, shock)

Software dBFA Suite: multiple analysis and editing capacities

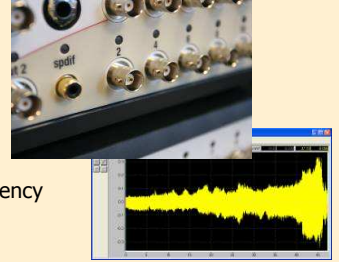
- ▶ Acquisition and real-time processing: FFT, 1/n octave, statistics, Leq, tachometry, order analysis, impact hammer, etc.
- ▶ Real-time display of spectrograms and waterfall spectra
- ▶ Additional post-processing, file import, Matlab communication
- ▶ Reporting Module
- ▶ Languages: English, French, German, Portuguese

Enhance your know-how in:

- ▶ Cars and Equipment
- ▶ Aeronautics and Space
- ▶ Electricity / IT / Electronics
- ▶ Rail and Navy
- ▶ Building and Public Works
- ▶ Research and Applications



Features	PRO-W / PRO-WA
<p>Pocket PC Remote Control</p> <p>Communication with NetdB:</p> <p>Capacities:</p>	<ul style="list-style-type: none"> ▶ LAN or WLAN (wireless) ▶ Definition of measurement configurations (number and type of transducers), definition of range, calibration, acquisition, recording, direct playback on NetdB ▶ Real-time equalisation filters ▶ Storage: 80 hours of data
<p>NetdB Platform</p> <p>Dimensions:</p> <p>Weight:</p> <p>Input channels:</p> <p>Input range:</p> <p>Digitisation:</p> <p>Sampling frequency:</p> <p>Signal-to-Noise ratio:</p> <p>Signal output</p> <p>Headphones:</p> <p>Digital Input/output:</p> <p>Consumption:</p> <p>Voltage / current:</p> <p>Battery:</p> <p>Battery life:</p> <p>Adapter:</p> <p>Storage:</p> <p>Upgradeability of number of channels:</p>	<ul style="list-style-type: none"> ▶ 250 x 85 x 263 mm (w x h x d) without projections ▶ 4.5 kg ▶ 12 dynamic channels with IEPE power supply ▶ 10 V rms (from -15 V to +15 V), 1 V rms (from -1.5 V to +1.5 V), 100 mV rms (from -150 mV to +150 mV) ▶ 24-bit resolution ▶ 51200 Hz ▶ 105 dB ▶ 2 x BNC connectors ▶ Jack connector – stereo output for headphones ▶ RCA connector for SPDIF input/output ▶ 20 W ▶ From 12 V to 14 VDC / 3.5 A (maximum) ▶ NiMH 4000mAh internal battery ▶ 2h with 12 channels operating at the highest sampling frequency ▶ AC 110 V / 250 V ▶ 85 GB of data (HDD) ▶ Synchronous chaining of several units
<p>dBFa Suite Analysis Software</p>	<ul style="list-style-type: none"> ▶ Acquisition and real-time processing (FFT, 1/n octave, statistics, Leq, Tacho, order analysis, etc.) ▶ Post-processing (average 1/n octave, 1/n octave versus time, average FFT, FFT versus time, FRF, statistics, etc.) ▶ Calculation on spectra and signals, signal editing, spectrograms and waterfall spectra ▶ A, B, C, Wb weightings and over 20 standard weighting functions ▶ Import of .wav, Teac/Sony files, MatLab communication ▶ Reporting module ▶ Languages: English, French, German, Portuguese



Ordering Information

PRO-W* and PRO-WA* packages <i>* PRO-W and PRO-WA packages are available in 4-ch, 6-ch, 8-ch, 10-ch or 12-ch</i>	PRO-W	PRO-WA
<p>NetdB 12-ch*</p> <p>▶ 12-ch* acquisition front end</p>	●	●
<p>NetdBRecorder</p> <p>▶ Wireless Remote Control Pack (USB-WiFi dongle & WiFi Pocket PC)</p>	●	●
<p>dBFA Recorder - Analyzer – Post-Processing Suite</p> <p>▶ Simultaneous signal recording and real-time multiprocessing and monitoring, post-processing analysis (average 1/n octave, 1/n octave versus time, average FFT, FFT versus time, FRF...)</p> <p>▶ Calculation on spectra and signals</p> <p>▶ Colour spectrograms and waterfall spectra</p> <p>▶ Tachometric acquisition</p> <p>▶ Signal editing</p> <p>▶ Import of Teac/Sony files</p> <p>▶ Reporting Module</p>	●	●
<p>dBFA Suite Advanced Options Pack</p> <p>▶ Real-Time Automation (user-defined sequential acquisition procedure)</p> <p>▶ Transient / Impact mode: coordinates management, user-defined windowing, Me'scope format export</p> <p>▶ MATLAB communicator in post-processing</p> <p>▶ Order analysis and order tracking in real time and in post-processing</p> <p>▶ Time-Frequency transforms, de-noising, convolution...</p>		●

Specifications presented here can be modified without notice. Rev.: 07/2008

IRIS GmbH
Arenskule 9
21339 Lüneburg



www.iris-gmbh.com
info@iris-gmbh.com

Büro Rhein-Ruhr:
Anemonenweg 16
42489 Wülfrath

Tel: 02058 / 78 31-76
Fax: 04131 / 2419-50

Tel: 04131 / 24 19-0
Fax: 04131 / 2419-50

