




**OneproD MVP-200** is an upgradeable multiple-function instrument designed for vibration monitoring and analysis in industrial environment. It includes various and independent modules which can be activated at any time by entering the right license number: Easy Collector, Advanced Collector, Premium Collector, Analyser, Balancer, DAT Recorder, Order Tracking.

**OneproD MVP-200** includes 2 acquisition channels and all techniques required for the diagnosis of rolling element bearing as well as journal bearing machines tools such as: bearing defect factor, time waveforms, spectrum, Kurtosis, envelope detection, orbit, zoom, transfer function, coherence, transmissibility, etc. are available. Light, handy and ergonomic, it also includes a laser-sighting pyrometer and a laser-sighting tachometer, in addition to an automatic wireless measurement point identification.

**OneproD MVP-2EX** is designed for use in very hazardous industrial areas. The intrinsically-safe version of MVP-200 is rated  EEx ia IIC T4 and certified according to the new ATEX standards.

The **OneproD XPR-300** data processing software, which results from 20 years experience in condition monitoring of rotating machines, has been designed to meet customers' requirements by combining user-friendliness, productivity, performance and reliability.

Based on Internet technology, **OneproD XPR-300** can also support other condition monitoring techniques, such as infrared thermography, oil analysis and process data.

Available in three configurations, single station, client/server or Web Intranet, **OneproD XPR-300** favours information sharing within and outside the company, and thus allowing a quick and efficient decision making.



INFRARED INNOVATION  
SYSTEMS GMBH

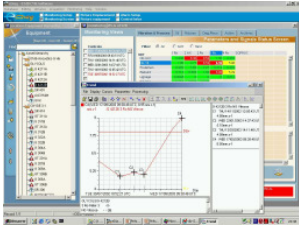
Arenskule 9  
D - 21339 Lüneburg  
Tel: 04131 / 2419-0  
Fax: 04131 / 241950  
Internet: www.iris-gmbh.com

Büro Rhein-Ruhr  
Centroallee 263a  
D - 46047 Oberhausen  
Tel: 0208 / 3048511  
Fax: 0208 / 3048509  
E-Mail: info@iris-gmbh.com

**OneproD MVP-200/OneproD XPR-300** is available in 5 packages.

### **OneproD MVP-200/OneproD XPR-300 Easy Package: first-level monitoring of simple machines**

The **OneproD MVP-200 Easy** collector allows carrying out overall level periodical measurements (including defect factor and Kurtosis). If required and for in depth analysis, FFT spectrum measurements (up to 800 lines) are also available in the Off Route mode.



**OneproD XPR-300 Easy** allows displaying results in a synthetic way (thanks to the colour pads matrix), displaying the overall level parameter trends reports as well as the spectra acquired in Off Route mode.

### **OneproD MVP-200/OneproD XPR-300 Advanced Package: first-level monitoring of all types of machines**

The **OneproD MVP-200 Advanced** collector allows performing measurements such as overall level spectrum (up to 3 200 lines) and time waveforms (up to 2000 samples).



**OneproD XPR-300 Advanced** manages data coming from other techniques, such as thermography and oil analysis.

**OneproD XPR-300 Advanced** display each machine's results in an automatic defect detection grid based on the post-processing of the collected data. Most common defects are automatically identified and indicated in a simple and user-friendly way.

Analysis tools, such as Rouldiag, a bearing database, and vib-Graph, the graphic analysis module, are included in **OneproD XPR-300 Advanced** in order allowing in depth analysis simply and quickly.

### **OneproD MVP-200/OneproD XPR-300 Premium Package: advanced monitoring of all types of machines**

The **OneproD MVP-200 Premium** collector allows performing measurements such as overall level, spectrum, zoom, envelope detection (up to 12,800 lines) and time waveforms (up to 32K samples).



complex machines.

Upgrades of **OneproD XPR-300 Premium** will add to the Advanced version deal with the use of all functions available in **OneproD MVP-200 Premium**, the management of statistical alarms (reference, average, last measurement, predictive) and advanced post processing (filtering, shock detection, self-correlation, etc.) the advanced post-processing tools are computed from raw time waveforms and spectrum and are especially suitable for the monitoring of

#### **Options for each package**

**OneproD MVP-200 Easy Collector:** Option "Single or Dual-Channel Balancing of 1 to 4 planes"

**OneproD MVP-200 Advanced Collector:** Option "Single or Dual-Channel Balancing of 1 to 4 planes"

**OneproD MVP-200 Premium Collector:** Option "Single or Dual-Channel Balancing of 1 to 4 planes",  
Option "Single or Dual-Channel Analyser",  
Option "Order analysis",  
Option "DAT Recorder"



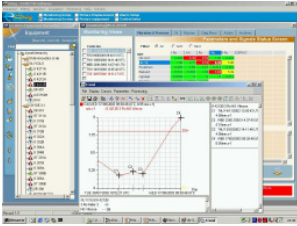
INFRARED INNOVATION  
SYSTEMS G M B H

Arenskule 9  
D - 21339 Lüneburg  
Tel: 04131 / 2419-0  
Fax: 04131 / 241950  
Internet: www.iris-gmbh.com

Büro Rhein-Ruhr  
Centroallee 263a  
D - 46047 Oberhausen  
Tel: 0208 / 3048511  
Fax: 0208 / 3048509  
E-Mail: info@iris-gmbh.com

**OneproD MVP-200 Advanced /OneproD XPR-300 Easy Package: first-level monitoring of all types of machines**

The **OneproD MVP-200 Advanced** collector allows performing measurements such as overall level spectrum (up to 3 200 lines) and time waveforms (up to 2000 samples).



**OneproD XPR-300 Easy** allows displaying results in a synthetic way (thanks to the colour pads matrix), displaying the overall level parameter trends reports as well as the spectra acquired in Off Route mode.

**OneproD MVP-200 Premium /OneproD XPR-300 Advanced Package: advanced monitoring of all types of machines**

The **OneproD MVP-200 Premium** collector allows performing measurements such as overall level, spectrum, zoom, envelope detection (up to 12,800 lines) and time waveforms (up to 32K samples).



**OneproD XPR-300 Advanced** manages data coming from other techniques, such as thermography and oil analysis.

**OneproD XPR-300 Advanced** display each machine's results in an automatic defect detection grid based on the post-processing of the collected data. Most common defects are automatically identified and indicated in a simple and user-friendly way.

Analysis tools, such as Rouldiag, a bearing database, and vib-Graph, the graphic analysis module, are included in **OneproD XPR-300 Advanced** in order allowing in depth analysis simply and quickly.

**Options for each package**

- OneproD MVP-200 Advanced Collector:** Option "Single or Dual-Channel Balancing of 1 to 4 planes"
- OneproD MVP-200 Premium Collector:** Option "Single or Dual-Channel Balancing of 1 to 4 planes",  
Option "Single or Dual-Channel Analyser",  
Option "Order analysis",  
Option "DAT Recorder"



INFRARED INNOVATION  
SYSTEMS GMBH

Arenskule 9  
D - 21339 Lüneburg  
Tel: 04131 / 2419-0  
Fax: 04131 / 241950  
Internet: www.iris-gmbh.com

Büro Rhein-Ruhr  
Centroallee 263a  
D - 46047 Oberhausen  
Tel: 0208 / 3048511  
Fax: 0208 / 3048509  
E-Mail: info@iris-gmbh.com